

# Maxx-Mini Lift MML-100 Service Manual



LIFT PRODUCTS INC  
PO BOX 349  
ELM GROVE WI 53122  
262-521-5720 FAX 262-521-5725  
Toll Free 877-543-8776

Model: MML-100, MML-100XL

S/N \_\_\_\_\_

Customer \_\_\_\_\_

**LIFT PRODUCTS, INC.**

# LIFT PRODUCTS, INC.

## REGISTRATION INFORMATION

(To validate your warranty and receive updated service bulletins, please complete this form)

Date \_\_\_\_\_ Model No. \_\_\_\_\_

How did you first hear of Lift Products?

\_\_\_\_ Magazine Ad (Specify which magazine) \_\_\_\_\_  
\_\_\_\_ Recommended by a dealer (Name of Dealer) \_\_\_\_\_  
\_\_\_\_ Received information in the mail \_\_\_\_\_  
\_\_\_\_ Internet \_\_\_\_\_  
\_\_\_\_ Other (Please specify) \_\_\_\_\_

What factors caused you to choose Lift Products? \_\_\_\_\_

\_\_\_\_\_  
\_\_\_\_\_

Describe how and where products are being used? \_\_\_\_\_

\_\_\_\_\_  
\_\_\_\_\_

Name of person completing this form \_\_\_\_\_

Title \_\_\_\_\_

Company \_\_\_\_\_

Street Address \_\_\_\_\_

City, State, Zip \_\_\_\_\_

Phone \_\_\_\_\_ Fax No. \_\_\_\_\_

Purchased From:

Name of Dealer \_\_\_\_\_

Street Address \_\_\_\_\_

City, State, Zip \_\_\_\_\_

Phone No. \_\_\_\_\_ Fax No. \_\_\_\_\_

Please fax this form to 262-521-5725.

## **OPERATION AND SERVICE MANUAL**

BEFORE OPERATING THE LIFT TABLE, READ THIS MANUAL CAREFULLY AND UNDERSTAND COMPLETELY. KEEP THIS MANUAL ON FILE FOR FUTURE REFERENCE. IF THIS IS LOST, PLEASE CONTACT YOUR LOCAL SUPPLIER FOR A NEW COPY. ALSO, IF THE WARNING/CAUTION DECAL ON THE UNIT IS LOST, PLEASE CONTACT YOUR LOCAL SUPPLIER FOR A NEW DECAL.

NOTE: On this manual, WARNING means the danger which can lead to death or serious injury. CAUTION mean the danger can lead to slight or property damage.

### **1. WARNING**

1. DO NOT put foot or hand in scissor mechanism.
2. DO NOT allow other person to stand in front of or behind lift table when it is moving.
3. DO NOT move lift table when table is in raised position. Load could fall down.
4. DO NOT enter under table.
5. DO NOT overload lift table.
6. DO NOT put foot in front of rolling wheels. Injury could result.
7. WATCH difference of floor level when moving lift table. Load could fall down.
8. DO NOT use lift table on slope or inclined surface, lift table may become uncontrollable and create danger.
9. DO NOT lift people. People could fall down and suffer severe injury.

### **2. CAUTION**

1. Read this operation manual carefully and understand completely operating lift table. Improper operation could create danger.
2. This lift table is a movable lifter designed to lift or lower rated load on table. DO NOT use lift table for other purpose than its intended use.
3. DO NOT allow person to operate lift table who does not understand its operation/
4. DO NOT lower table too fast. Load could fall down and create danger.
5. KEEP watching the condition of load. Stop operating lift table if load becomes unstable.
6. Brake lift table when sliding load on or off table.
7. DO NOT side or end load. Load must be distributed on a least 80% of table area.
8. DO NOT use lift table with unstable, unbalanced loosely stacked load.
9. Practice maintenance work according to service instructions.
10. DO NOT modify lift table without manufacturer's written consent.
11. REMOVE load from table and use safety stopper to prevent table from lowering when servicing lift table.
12. This lift table is not designed to be water resistant. Use lift table under dry conditions.

### 3. DAILY INSPECTION

Daily inspection is effective to find the malfunction or fault on lift table. Check lift table on the following points before operation.

**CAUTION: DO NOT USE LIFT TABLE IF ANY MALFUNCTION OR FAULT IS FOUND**

1. Check for scratch, bending or cracking on the lift table.
2. Check if there is any oil leakage from the cylinder.
3. Check the vertical creep of the table.
4. Check the smooth movement of the wheels.
5. Check the function of brake.
6. Check if all the bolts and nuts are tightened firmly.

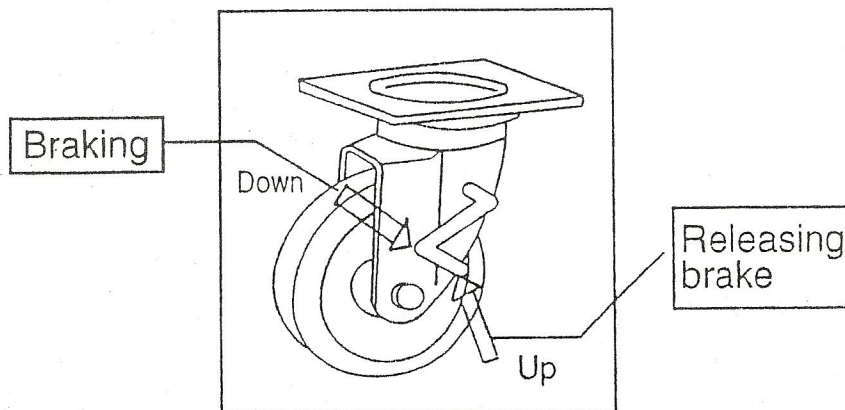
### 4. OPERATING LIFT TABLE

#### 4-1. HOW TO USE THE BRAKE

**CAUTION:** Brake lift table when not moving it in order to prevent sudden movement.

The brake is equipped with the swivel caster on the right side.

1. Braking the wheel, press the brake pedal.
2. Releasing the brake, lift up the brake pedal.



## 4-2. LIFTING THE TABLE

**WARNING:** DO NOT overload lift table. Stay within its rated capacity. DO NOT side or end load must be distributed on at least 80% of table area.

Press the lifting pedal several times until the table reaches the desired position.

1. The table does not elevate after reaching the highest position even if the lifting pedal is pressed.
2. The table lowers slightly after reaching the highest position.

MAXIMUM CAPACITY OF TABLE							
MML-15	MML-25	MML-50	MML-75	MML-100	MML-100XL	MML-30D	MML-50D
330 lbs	550 lbs	1,100 lbs	1,650 lbs	2,200 lbs	2,000 lbs	660 lbs	1,100 lbs

NOTE: The hydraulic cylinder is designed to hold the table. As is the nature of the hydraulic system, the table lowers very slowly over an extended period of time. Please note the table does not stay in the same position indefinitely.

## 5-3. LOWERING TABLE

**WARNING:** DO NOT put foot or hand in scissor mechanism.

Pull the lowering lever up and the table lowers.

## 5. SPECIFICATIONS

Model	Capacity (Lbs)	Table Size	Table Height	Weight	Pedal to top. (approx. times)
MML-15	330	17.75 x 27.5	10"-30"	90	16
MML-25	550	19.75 x 32.75	12"-36"	172	25
MML-50	1100	20.5 x 39.75	17"-36"	260	44
MML-75	1650	20.5 x 39.75	17"-39"	264	55
MML-100	2200	20.5 x 39.75	17"-39"	301	68
MML-100XL	2000	31.5 x 47.25	17"-48"	358	53
MML-30D	660	20.5 x 39.75	17"-62"	330	68
MML-50D	1100	20.5 x 39.75	17"-62"	370	95

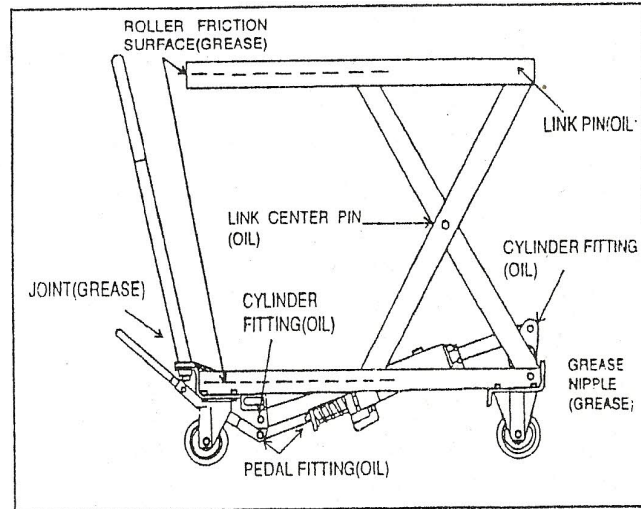
## 6. SERVICE INSTRUCTIONS

6-1. LUBRICATE EACH POINT DESCRIBED BELOW EVERY MONTH:

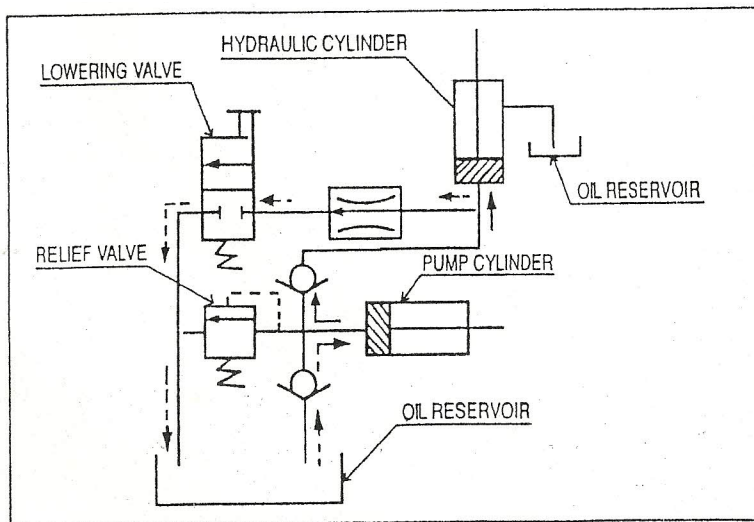
6-2. CHANGING HYDRAULIC OIL EVERY 12 MONTHS.

Lubricating Points:

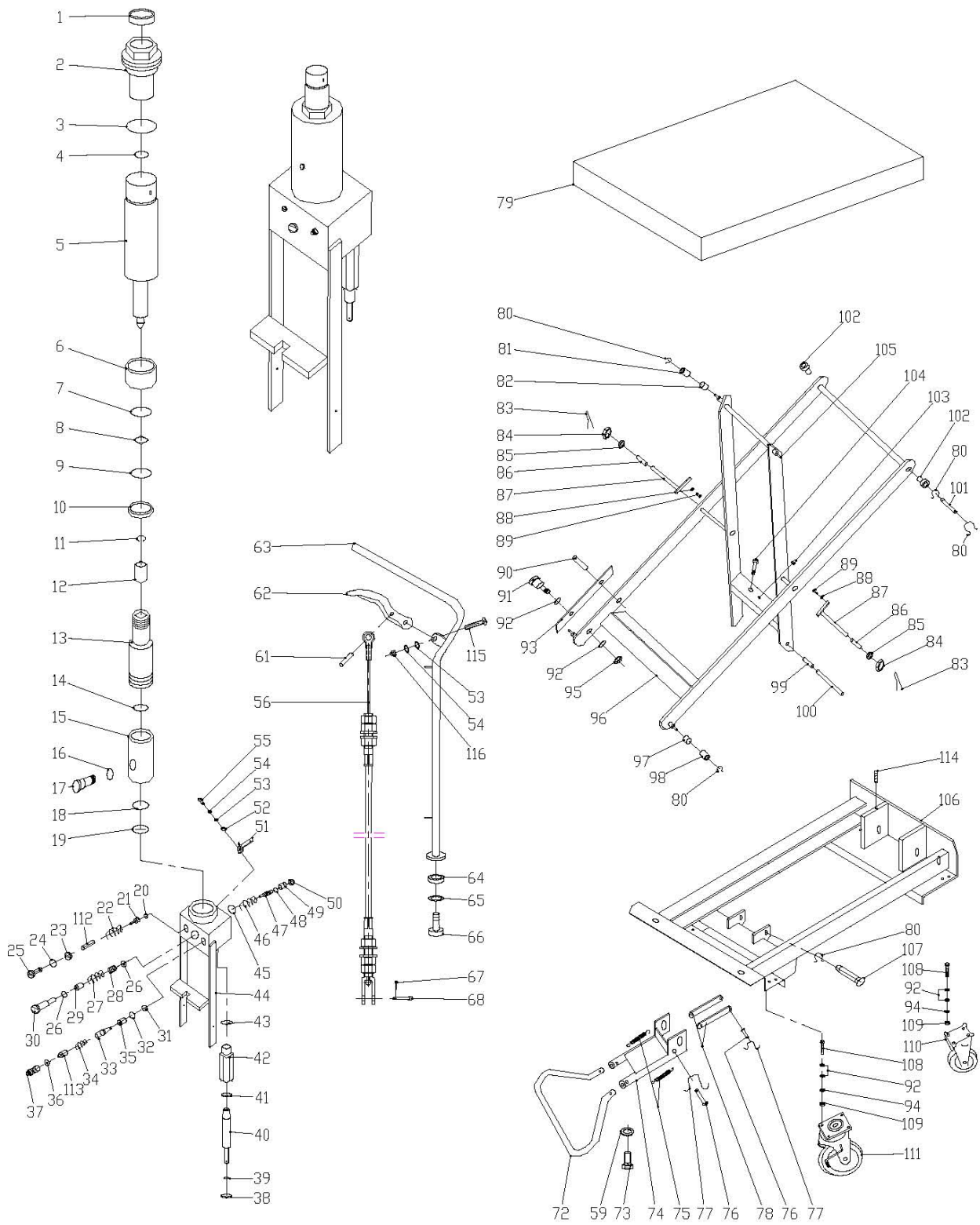
1. Fitting of cylinder...Oil
2. Roller friction surface...Grease
3. Link Pin...Oil
4. Pedal fitting point...Oil
5. Link center pin...Oil
6. Joint...Oil
7. Grease nipple...Grease
8. Hydraulic circuit



## HYDRAULIC CIRCUIT



# MML-100



## PARTS LIST

ILL. NO.	DESCRIPTION	QTY REQ.	ILL. NO.	DESCRIPTION	QTY REQ.
1	Seal Cover d30xD43.5x5	1	56	Put Pressure Assembly Line	1
2	Cylinder Cover	1	59	Washer 8	2
3	O-Ring d75x3.55	2	61	Spring Pin	1
4	O-Ring d35.5x3.55	1	62	Control Link	1
5	Piston Rod	1	63	Handle	1
6	Spacing casing	1	64	Spacing Casing	2
7	Guide Ring 2x15	1	65	Spring Washer 12	2
8	O-Ring D20x2.4	1	66	Hex Screw M12x30	2
9	Seal Ring d39xD45x4.5	1	67	Split Pin 2x15	1
10	Retainer for Piston Rod	1	68	Pin	1
11	Spacing Retainer 18	1	72	Pedal Bent Pipe	1
12	Piston	1	73	Hex Soch Screw M8x20	2
13	Cylinder	1	74	Shake Link	1
14	Cylinder Washer	1	75	Spring	2
15	Reservoir	1	76	Pin Axle	2
16	O-Ring d10x2.65	1	77	Retainer 10	2
17	Filler Screw	1	78	Link	2
18	O-Ring d75x2.65	1	79	Table	1
19	Washer for Reservoir	1	80	Retainer 20	7
20	Steel Ball 5	1	81	Roller for Table	2
21	Spring Base	1	82	Bushing	2
22	Regulating Pressure Spring	1	83	Split Pin 3.2x26	2
23	Regulating Pressure Screw	1	84	Nut M16	2
24	O-Ring d7.1x1.8	1	85	Washing	2
25	End Cover	2	86	Bushing	2
26	O-Ring d15x2.65	1	87	Pin Axle for Scissors	2
27	Regulating Speed Spring	1	88	Spring Washer 8	2
28	Regulating Slide Valve	1	89	Hex Screw M8x16	2
29	Regulating Speed Spring Casing	1	90	Spring Pin 8x30	2
30	Regulating Speed Slide Casing	1	91	Screw Bolt M10x40	2
31	Steel Ball 7	1	92	Washer 10	36
32	O-Ring d6.9x1.8	1	93	Safety Rod	2
33	Conical Valve	1	94	Spring Washer 10	16
34	Spring	1	95	Nut M10	2
35	Check Valve Casing	1	96	External Scissors Lever	1
36	O-Ring d10x1.8	1	97	Bushing	2
37	Check Valve Screw	1	98	Roller for Chassis	2
38	Seal Cover d18xD25x4.5	1	99	Bushing	2
39	O-ring d18x2.65	1	100	Pin Axle For Chassis	1
40	Pump Plunger	1	101	Pin Axle For Table	1

ILL. NO.	DESCRIPTION	QTY REQ.	ILL. NO.	DESCRIPTION	QTY REQ.
41	Y-Ring d10xD18x6	1	102	Bushing	2
42	Pump Body for Plunder	1	103	Oil Cup	1
43	O-Ring D28x3.1	1	104	Bolt M8x12	1
44	Pump Body	1	105	Internal Scissors Lever	1
45	O-Ring d10.6x2.65	1	106	Chassis	1
46	Spring	1	107	Axle	1
47	Reflux Rod	1	108	Hex Soch Screw M10x25	16
48	O-Ring d4x1.8	1	109	Nut M10	16
49	Guide Casing	1	110	Wheel	2
50	Protect Casing	1	111	Wheel	2
51	Lever	1	112	Rod	1
52	Lever Bushing	1	113	Rod	1
53	Washer 6	1	114	Bolt M6x8	1
54	Spring Washer 6	2	115	Screw M6x30	1
55	Hex Soch Screw M6x16	1	116	Cover-Type Nut M6	1
A	Pump Assembly		1-50, 112, 113		
B	Swivel Wheel Assembly		111		
C	Front Wheel Assembly		110		
D	Seal Kit Assembly		1, 3, 4, 7, 8, 9, 16,18, 24, 26, 32, 36, 39, 41 43, 45, 48		
E	Handle Assembly		53, 54, 56, 61, 62, 63, 67, 68, 115, 116		