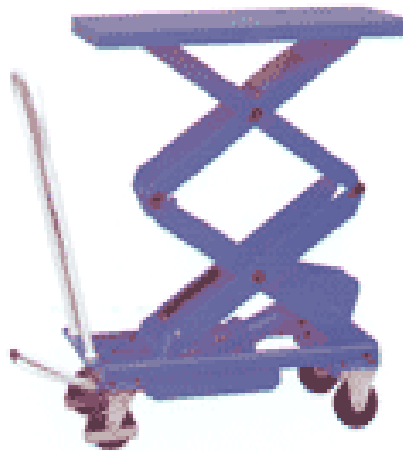


# Maxx-Mini Lift MML-30D Service Manual



LIFT PRODUCTS INC  
PO BOX 349  
ELM GROVE WI 53122  
262-521-5720 FAX 262-521-5725  
Toll Free 877-543-8776

Model: MML-30D

S/N \_\_\_\_\_

Customer \_\_\_\_\_

**LIFT PRODUCTS, INC.**

# LIFT PRODUCTS, INC.

## REGISTRATION INFORMATION

(To validate your warranty and receive updated service bulletins, please complete this form)

Date \_\_\_\_\_ Model No. \_\_\_\_\_

How did you first hear of Lift Products?

\_\_\_\_ Magazine Ad (Specify which magazine) \_\_\_\_\_  
\_\_\_\_ Recommended by a dealer (Name of Dealer) \_\_\_\_\_  
\_\_\_\_ Received information in the mail \_\_\_\_\_  
\_\_\_\_ Internet \_\_\_\_\_  
\_\_\_\_ Other (Please specify) \_\_\_\_\_

What factors caused you to choose Lift Products? \_\_\_\_\_

\_\_\_\_\_  
\_\_\_\_\_

Describe how and where products are being used? \_\_\_\_\_

\_\_\_\_\_  
\_\_\_\_\_

Name of person completing this form \_\_\_\_\_

Title \_\_\_\_\_

Company \_\_\_\_\_

Street Address \_\_\_\_\_

City, State, Zip \_\_\_\_\_

Phone \_\_\_\_\_ Fax No. \_\_\_\_\_

Purchased From:

Name of Dealer \_\_\_\_\_

Street Address \_\_\_\_\_

City, State, Zip \_\_\_\_\_

Phone No. \_\_\_\_\_ Fax No. \_\_\_\_\_

Please fax this form to 262-521-5725.

## **OPERATION AND SERVICE MANUAL**

BEFORE OPERATING THE LIFT TABLE, READ THIS MANUAL CAREFULLY AND UNDERSTAND COMPLETELY. KEEP THIS MANUAL ON FILE FOR FUTURE REFERENCE. IF THIS IS LOST, PLEASE CONTACT YOUR LOCAL SUPPLIER FOR A NEW COPY. ALSO, IF THE WARNING/CAUTION DECAL ON THE UNIT IS LOST, PLEASE CONTACT YOUR LOCAL SUPPLIER FOR A NEW DECAL.

NOTE: On this manual, WARNING means the danger which can lead to death or serious injury. CAUTION mean the danger can lead to slight or property damage.

### **1. WARNING**

1. DO NOT put foot or hand in scissor mechanism.
2. DO NOT allow other person to stand in front of or behind lift table when it is moving.
3. DO NOT move lift table when table is in raised position. Load could fall down.
4. DO NOT enter under table.
5. DO NOT overload lift table.
6. DO NOT put foot in front of rolling wheels. Injury could result.
7. WATCH difference of floor level when moving lift table. Load could fall down.
8. DO NOT use lift table on slope or inclined surface, lift table may become uncontrollable and create danger.
9. DO NOT lift people. People could fall down and suffer severe injury.

### **2. CAUTION**

1. Read this operation manual carefully and understand completely operating lift table. Improper operation could create danger.
2. This lift table is a movable lifter designed to lift or lower rated load on table. DO NOT use lift table for other purpose than its intended use.
3. DO NOT allow person to operate lift table who does not understand its operation/
4. DO NOT lower table too fast. Load could fall down and create danger.
5. KEEP watching the condition of load. Stop operating lift table if load becomes unstable.
6. Brake lift table when sliding load on or off table.
7. DO NOT side or end load. Load must be distributed on a least 80% of table area.
8. DO NOT use lift table with unstable, unbalanced loosely stacked load.
9. Practice maintenance work according to service instructions.
10. DO NOT modify lift table without manufacturer's written consent.
11. REMOVE load from table and use safety stopper to prevent table from lowering when servicing lift table.
12. This lift table is not designed to be water resistant. Use lift table under dry conditions.

### 3. DAILY INSPECTION

Daily inspection is effective to find the malfunction or fault on lift table. Check lift table on the following points before operation.

**CAUTION: DO NOT USE LIFT TABLE IF ANY MALFUNCTION OR FAULT IS FOUND**

1. Check for scratch, bending or cracking on the lift table.
2. Check if there is any oil leakage from the cylinder.
3. Check the vertical creep of the table.
4. Check the smooth movement of the wheels.
5. Check the function of brake.
6. Check if all the bolts and nuts are tightened firmly.

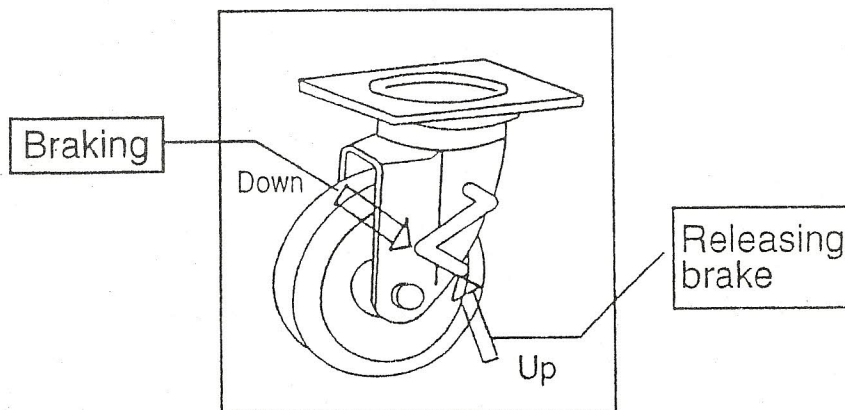
### 4. OPERATING LIFT TABLE

#### 4-1. HOW TO USE THE BRAKE

**CAUTION:** Brake lift table when not moving it in order to prevent sudden movement.

The brake is equipped with the swivel caster on the right side.

1. Braking the wheel, press the brake pedal.
2. Releasing the brake, lift up the brake pedal.



## 4-2. LIFTING THE TABLE

**WARNING:** DO NOT overload lift table. Stay within its rated capacity. DO NOT side or end load must be distributed on at least 80% of table area.

Press the lifting pedal several times until the table reaches the desired position.

1. The table does not elevate after reaching the highest position even if the lifting pedal is pressed.
2. The table lowers slightly after reaching the highest position.

MAXIMUM CAPACITY OF TABLE							
MML-15	MML-25	MML-50	MML-75	MML-100	MML-100XL	MML-30D	MML-50D
330 lbs	550 lbs	1,100 lbs	1,650 lbs	2,200 lbs	2,000 lbs	660 lbs	1,100 lbs

NOTE: The hydraulic cylinder is designed to hold the table. As is the nature of the hydraulic system, the table lowers very slowly over an extended period of time. Please note the table does not stay in the same position indefinitely.

## 5-3. LOWERING TABLE

**WARNING:** DO NOT put foot or hand in scissor mechanism.

Pull the lowering lever up and the table lowers.

## 5. SPECIFICATIONS

Model	Capacity (Lbs)	Table Size	Table Height	Weight	Pedal to top. (approx. times)
MML-15	330	17.75 x 27.5	10"-30"	90	16
MML-25	550	19.75 x 32.75	12"-36"	172	25
MML-50	1100	20.5 x 39.75	17"-36"	260	44
MML-75	1650	20.5 x 39.75	17"-39"	264	55
MML-100	2200	20.5 x 39.75	17"-39"	301	68
MML-100XL	2000	31.5 x 47.25	17"-48"	358	53
MML-30D	660	20.5 x 39.75	17"-62"	330	68
MML-50D	1100	20.5 x 39.75	17"-62"	370	95

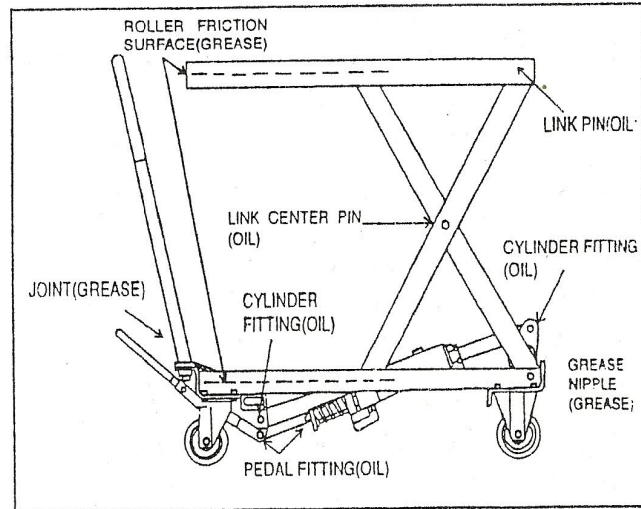
## 6. SERVICE INSTRUCTIONS

6-1. LUBRICATE EACH POINT DESCRIBED BELOW EVERY MONTH:

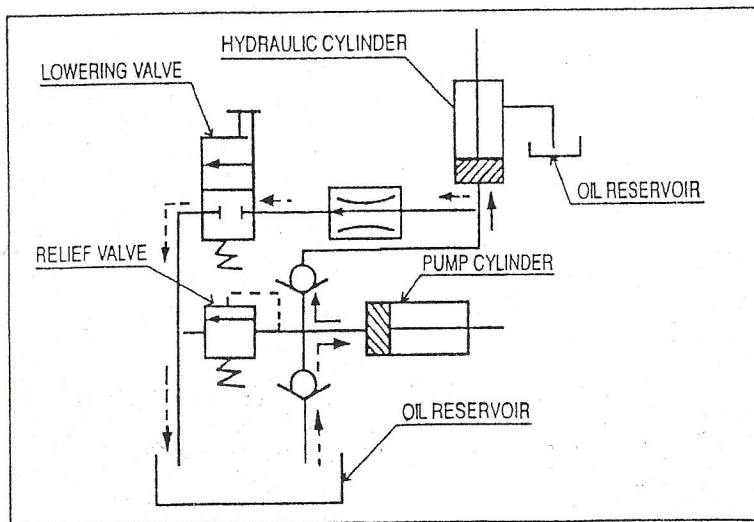
6-2. CHANGING HYDRAULIC OIL EVERY 12 MONTHS.

Lubricating Points:

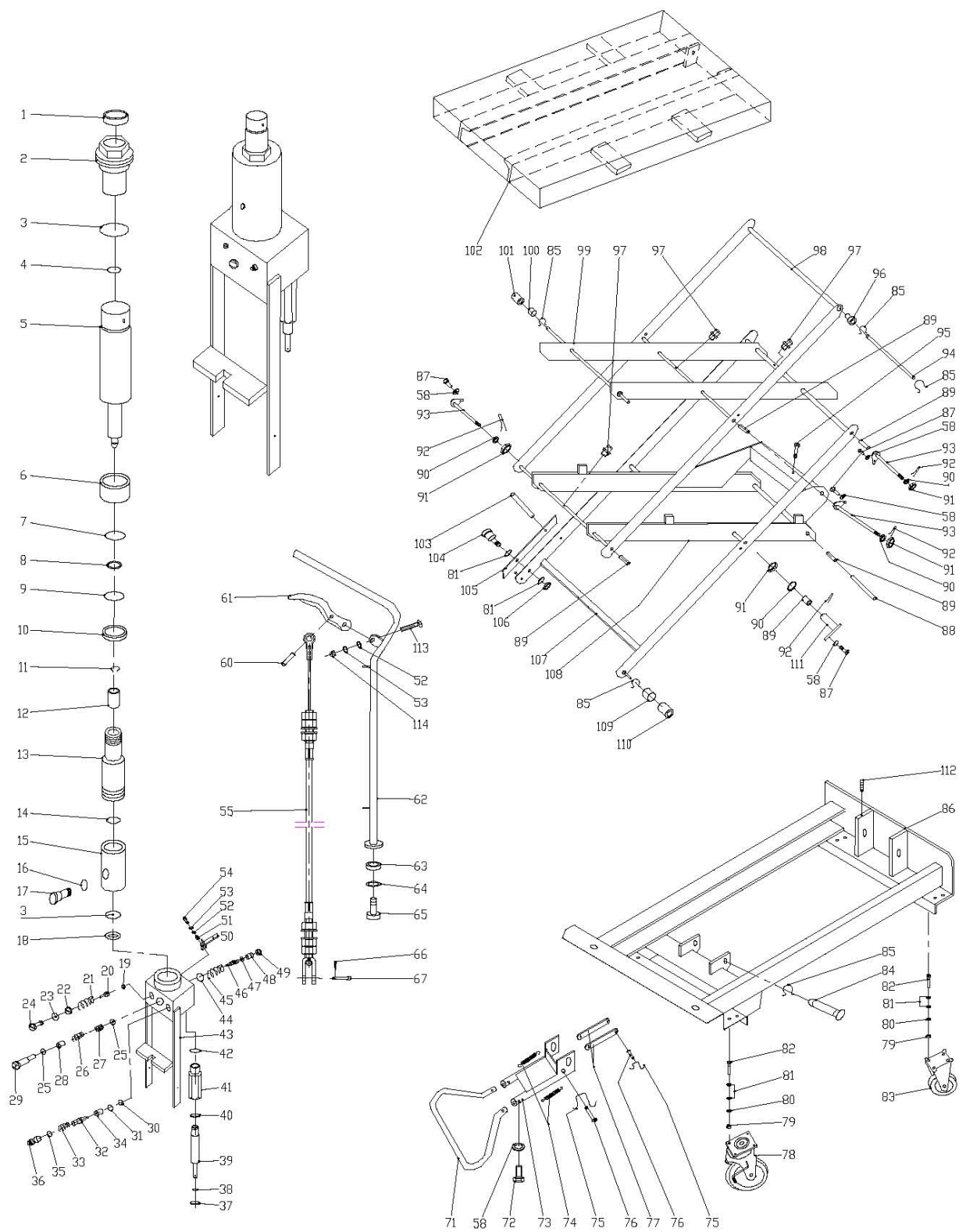
1. Fitting of cylinder...Oil
2. Roller friction surface...Grease
3. Link Pin...Oil
4. Pedal fitting point...Oil
5. Link center pin...Oil
6. Joint...Oil
7. Grease nipple...Grease
8. Hydraulic circuit



## HYDRAULIC CIRCUIT



# MML-30D



## PARTS LIST

ILL. NO.	DESCRIPTION	QTY REQ.	ILL. NO.	DESCRIPTION	QTY REQ.
1	Seal Cover d30xD42x7	1	55	Put Pressure Assembly Line	1
2	Cylinder Cover	1	58	Washer 8	2
3	O-Ring d63x2.65	2	60	Spring Pin	1
4	O-Ring d30x3.55	1	61	Control Link	1
5	Piston Rod	1	62	Handle	1
6	Spacing casing	1	63	Spacing Casing	2
7	Guide Ring 1.5x15	1	64	Spring Washer 12	2
8	O-Ring D20x2.4	1	65	Hex Screw M12x30	2
9	Seal Ring d34xD40x4.5	1	66	Split Pin 2x15	1
10	Retainer for Piston Rod	1	67	Pin	1
11	Spacing Retainer 18	1	71	Pedal Bent Pipe	1
12	Piston	1	72	Hex Soch Screw M8x20	2
13	Cylinder	1	73	Shake Link	1
14	Cylinder Washer	1	74	Spring	2
15	Reservoir	1	75	Retainer 10	2
16	O-Ring d10x2.65	1	76	Pin Axle	2
17	Filler Screw	1	77	Link	2
18	Washer for Reservoir	1	78	Wheel	2
19	Steel Ball 5	1	79	Nut M10	16
20	Spring Base	1	80	Spring Washer 10	16
21	Regulating Pressure Spring	1	81	Washer 10	36
22	Regulating Pressure Screw	1	82	Hex Soch Screw M10x25	16
23	O-Ring d7.1x1.8	1	83	Wheel	2
24	End Cover	1	84	Axle	1
25	O-Ring d15x2.65	2	85	Retainer 20	7
26	Regulating Speed Spring	1	86	Chassis	1
27	Regulating Slide Valve	1	87	Hex Screw M8x16	5
28	Regulating Speed Spring Casing	1	88	Pin Axle For Chassis	1
29	Regulating Speed Slide Casing	1	89	Bushing	10
30	Steel Ball 7	1	90	Washing	5
31	O-Ring d6.9x18	1	91	Slotting Nut M16x1.5	5
32	Conical Valve	1	92	Split Pin 3.2x26	5
33	Spring	1	93	Pin Axle	3
34	Check Valve Casing	1	94	Pin Axle for Table	1
35	O-Ring d10x1.8	1	85	Hex Socket Set Screw M8x12	1
36	Check Valve Screw	1	96	Bushing	2
37	Seal Cover d18xD25x4.5	1	97	Oil Cup	4
38	O-ring d18x2.65	1	98	External Scissors Lever for Table	1
39	Pump Plunger	1	99	Internal Scissors Lever for Table	1
40	Y-Ring	1	100	Bushing	2
41	Pump Body for Plunder	1	101	Roller for Table	2



ILL. NO.	DESCRIPTION	QTY REQ.	ILL. NO.	DESCRIPTION	QTY REQ.
42	O-Ring D28x3.1	1	102	Table	2
43	Pump Body	1	103	Spring Pin 8x30	1
44	O-Ring d10.6x2.65	1	104	Screw Bolt M10x40	1
45	Spring	1	105	Safety Rod	1
46	Reflux Rod	1	106	Nut M10	1
47	O-Ring d4x1.8	1	107	External Scissors Lever for Chassis	1
48	Guide Casing	1	108	Internal Scissors Lever for Chassis	16
49	Protect Casing	1	109	Bushing	16
50	Lever	1	110	Roller for Chassis	2
51	Lever Bushing	1	111	Pin Axle	2
52	Washer 6	2	112	Bolt M6x8	1
53	Spring Washer 6	1	113	Screw M6x30	1
54	Hex Soch Screw M6x16	1	114	Cover-Type Nut M6	1
A	Pump Assembly		1-49, 113, 114		
B	Swivel Wheel Assembly		78		
C	Front Wheel Assembly		83		
D	Seal Kit Assembly		1, 3, 3A, 4, 7, 8, 9, 16, 23, 25, 31, 35, 37, 38, 40 42, 44, 47		
	Handle Assembly		52, 53, 55, 60, 61, 62, 66, 67, 115, 116		