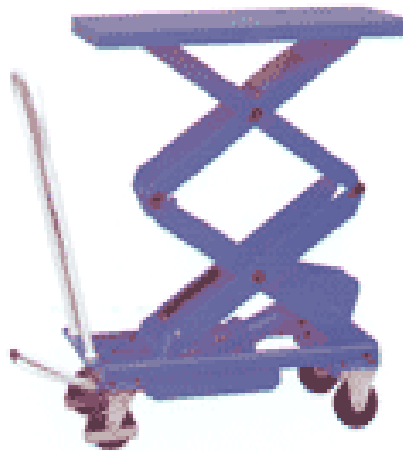


Maxx-Mini Lift MML-50D Service Manual



LIFT PRODUCTS INC
PO BOX 349
ELM GROVE WI 53122
262-521-5720 FAX 262-521-5725
Toll Free 877-543-8776

Model: MML-50D

S/N _____

Customer _____

LIFT PRODUCTS, INC.

LIFT PRODUCTS, INC.

REGISTRATION INFORMATION

(To validate your warranty and receive updated service bulletins, please complete this form)

Date _____ Model No. _____

How did you first hear of Lift Products?

____ Magazine Ad (Specify which magazine) _____
____ Recommended by a dealer (Name of Dealer) _____
____ Received information in the mail _____
____ Internet _____
____ Other (Please specify) _____

What factors caused you to choose Lift Products? _____

Describe how and where products are being used? _____

Name of person completing this form _____

Title _____

Company _____

Street Address _____

City, State, Zip _____

Phone _____ Fax No. _____

Purchased From:

Name of Dealer _____

Street Address _____

City, State, Zip _____

Phone No. _____ Fax No. _____

Please fax this form to 262-521-5725.

OPERATION AND SERVICE MANUAL

BEFORE OPERATING THE LIFT TABLE, READ THIS MANUAL CAREFULLY AND UNDERSTAND COMPLETELY. KEEP THIS MANUAL ON FILE FOR FUTURE REFERENCE. IF THIS IS LOST, PLEASE CONTACT YOUR LOCAL SUPPLIER FOR A NEW COPY. ALSO, IF THE WARNING/CAUTION DECAL ON THE UNIT IS LOST, PLEASE CONTACT YOUR LOCAL SUPPLIER FOR A NEW DECAL.

NOTE: On this manual, WARNING means the danger which can lead to death or serious injury. CAUTION mean the danger can lead to slight or property damage.

1. WARNING

1. DO NOT put foot or hand in scissor mechanism.
2. DO NOT allow other person to stand in front of or behind lift table when it is moving.
3. DO NOT move lift table when table is in raised position. Load could fall down.
4. DO NOT enter under table.
5. DO NOT overload lift table.
6. DO NOT put foot in front of rolling wheels. Injury could result.
7. WATCH difference of floor level when moving lift table. Load could fall down.
8. DO NOT use lift table on slope or inclined surface, lift table may become uncontrollable and create danger.
9. DO NOT lift people. People could fall down and suffer severe injury.

2. CAUTION

1. Read this operation manual carefully and understand completely operating lift table. Improper operation could create danger.
2. This lift table is a movable lifter designed to lift or lower rated load on table. DO NOT use lift table for other purpose than its intended use.
3. DO NOT allow person to operate lift table who does not understand its operation/
4. DO NOT lower table too fast. Load could fall down and create danger.
5. KEEP watching the condition of load. Stop operating lift table if load becomes unstable.
6. Brake lift table when sliding load on or off table.
7. DO NOT side or end load. Load must be distributed on a least 80% of table area.
8. DO NOT use lift table with unstable, unbalanced loosely stacked load.
9. Practice maintenance work according to service instructions.
10. DO NOT modify lift table without manufacturer's written consent.
11. REMOVE load from table and use safety stopper to prevent table from lowering when servicing lift table.
12. This lift table is not designed to be water resistant. Use lift table under dry conditions.

3. DAILY INSPECTION

Daily inspection is effective to find the malfunction or fault on lift table. Check lift table on the following points before operation.

CAUTION: DO NOT USE LIFT TABLE IF ANY MALFUNCTION OR FAULT IS FOUND

1. Check for scratch, bending or cracking on the lift table.
2. Check if there is any oil leakage from the cylinder.
3. Check the vertical creep of the table.
4. Check the smooth movement of the wheels.
5. Check the function of brake.
6. Check if all the bolts and nuts are tightened firmly.

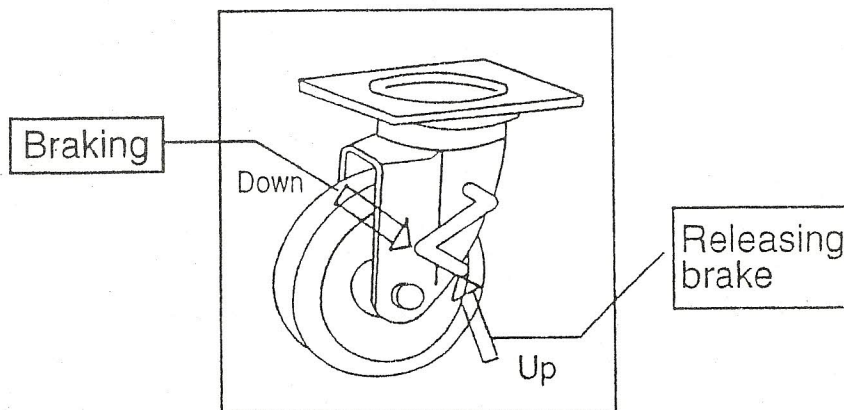
4. OPERATING LIFT TABLE

4-1. HOW TO USE THE BRAKE

CAUTION: Brake lift table when not moving it in order to prevent sudden movement.

The brake is equipped with the swivel caster on the right side.

1. Braking the wheel, press the brake pedal.
2. Releasing the brake, lift up the brake pedal.



4-2. LIFTING THE TABLE

WARNING: DO NOT overload lift table. Stay within its rated capacity. DO NOT side or end load must be distributed on at least 80% of table area.

Press the lifting pedal several times until the table reaches the desired position.

1. The table does not elevate after reaching the highest position even if the lifting pedal is pressed.
2. The table lowers slightly after reaching the highest position.

MAXIMUM CAPACITY OF TABLE							
MML-15	MML-25	MML-50	MML-75	MML-100	MML-100XL	MML-30D	MML-50D
330 lbs	550 lbs	1,100 lbs	1,650 lbs	2,200 lbs	2,000 lbs	660 lbs	1,100 lbs

NOTE: The hydraulic cylinder is designed to hold the table. As is the nature of the hydraulic system, the table lowers very slowly over an extended period of time. Please note the table does not stay in the same position indefinitely.

5-3. LOWERING TABLE

WARNING: DO NOT put foot or hand in scissor mechanism.

Pull the lowering lever up and the table lowers.

5. SPECIFICATIONS

Model	Capacity (Lbs)	Table Size	Table Height	Weight	Pedal to top. (approx. times)
MML-15	330	17.75 x 27.5	10"-30"	90	16
MML-25	550	19.75 x 32.75	12"-36"	172	25
MML-50	1100	20.5 x 39.75	17"-36"	260	44
MML-75	1650	20.5 x 39.75	17"-39"	264	55
MML-100	2200	20.5 x 39.75	17"-39"	301	68
MML-100XL	2000	31.5 x 47.25	17"-48"	358	53
MML-30D	660	20.5 x 39.75	17"-62"	330	68
MML-50D	1100	20.5 x 39.75	17"-62"	370	95

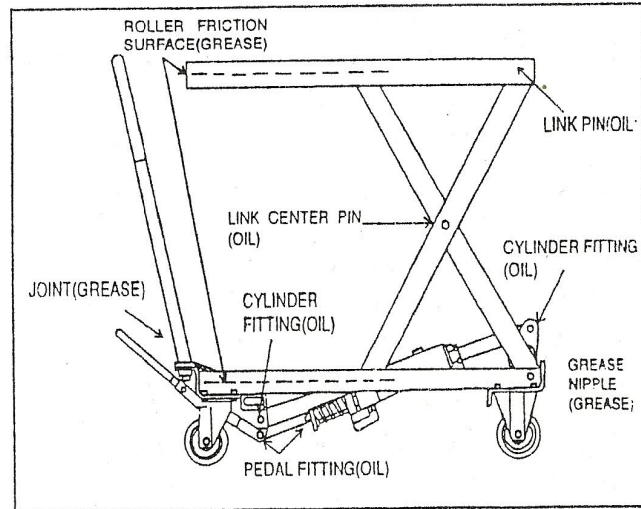
6. SERVICE INSTRUCTIONS

6-1. LUBRICATE EACH POINT DESCRIBED BELOW EVERY MONTH:

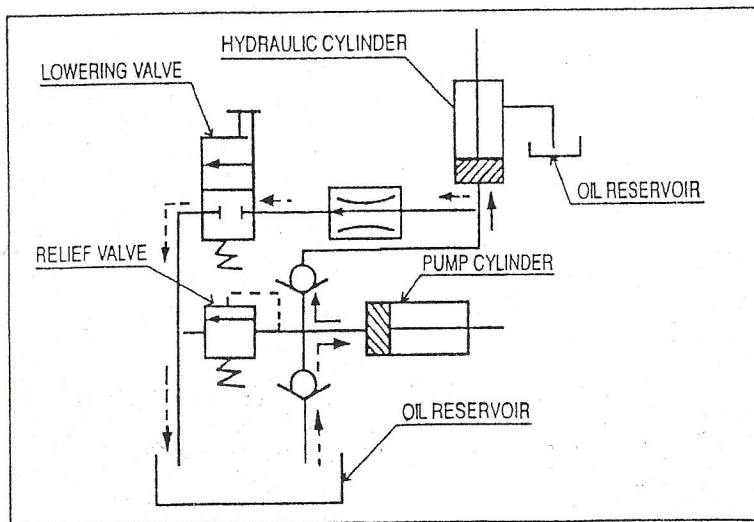
6-2. CHANGING HYDRAULIC OIL EVERY 12 MONTHS.

Lubricating Points:

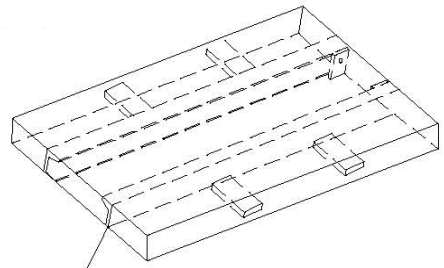
1. Fitting of cylinder...Oil
2. Roller friction surface...Grease
3. Link Pin...Oil
4. Pedal fitting point...Oil
5. Link center pin...Oil
6. Joint...Oil
7. Grease nipple...Grease
8. Hydraulic circuit



HYDRAULIC CIRCUIT



This diagram shows an exploded view of a rectangular box assembly. The main body is a rectangular box with internal dividers. A lid is shown above the box, and a small rectangular piece is shown below the box. Dashed lines indicate the assembly path and alignment of the components.



PARTS LIST

ILL. NO.	DESCRIPTION	QTY REQ.	ILL. NO.	DESCRIPTION	QTY REQ.
1	Seal Cover d35xD43.5x5	1	60	Spring Pin	1
2	Cylinder Cover	1	61	Control Link	1
3	O-Ring d75x3.55	1	62	Handle	1
3a	O-Ring d75x2.65	1	63	Spacing Casing	2
4	O-Ring d35.5x3.55	1	64	Spring Washer 12	2
5	Piston Rod	1	65	Hex Screw M12x30	2
6	Spacing Casing	1	66	Split Pin 2x15	1
7	Guide Ring 2x15	1	67	Pin	1
8	O-Ring D20x2.4	1	71	Pedal Bent Pipe	1
9	Seal Ring d39xD45x4.5	1	72	Hex Soch Screw M8x20	2
10	Retainer for Piston Rod	1	73	Shake Link	1
11	Spacing Retainer 18	1	74	Spring	2
12	Piston	1	75	Retainer 10	2
13	Cylinder	1	76	Pin Axle	2
14	Cylinder Washer	1	77	Link	2
15	Reservoir	1	78	Wheel	2
16	O-Ring d10x2.65	1	79	Nut M10	16
17	Filler Screw	1	80	Spring Washer 10	16
18	Washer for Reservoir	1	81	Washer 10	36
19	Steel Ball 5	1	82	Hex Soch Screw M10x25	16
20	Spring Base	1	83	Wheel	2
21	Regulating Pressure Spring	1	84	Axle	1
22	Regulating Pressure Screw	1	85	Retainer 20	7
23	O-Ring d7.1x1.8	1	86	Chassis	1
24	End Cover	1	87	Hex Screw M8x16	5
25	O-Ring d15x2.65	2	88	Pin Axle For Chassis	1
26	Regulating Speed Spring	1	89	Bushing	8
27	Regulating Slide Valve	1	89A	Bushing	2
28	Regulating Speed Spring Casing	1	90	Washing	3
29	Regulating Speed Slide Casing	1	90A	Washing	2
30	Steel Ball 7	1	91	Slotting Nut M16x1.5	5
31	O-Ring d6.9x18	1	92	Split Pin 3.2x26	5
32	Conical Valve	1	93	Pin Axle	3
33	Spring	1	94	Pin Axle for Table	1
34	Check Valve Casing	1	95	Hex Socket Set Screw M8x12	1
35	O-Ring d10x1.8	1	96	Bushing	2
36	Check Valve Screw	1	97	Oil Cup	4
37	Seal Cover d18xD25x4.5	1	98	External Scissors Lever for Table	1
38	O-ring d18x2.65	1	99	Internal Scissors Lever for Table	1
39	Pump Plunger	1	100	Bushing	2
40	Y-Ring d10xD18x16	1	101	Roller for Table	2

ILL. NO.	DESCRIPTION	QTY REQ.	ILL. NO.	DESCRIPTION	QTY REQ.
41	Pump Body for Plunger	1	102	Table	1
42	O-Ring D28x3.1	1	103	Spring Pin 8x30	2
43	Pump Body	1	104	Screw Bolt M10x40	2
44	O-Ring d10.6x2.65	1	105	Safety Rod	2
45	Spring	1	106	Nut M10	2
46	Reflux Rod	1	107	External Scissors Lever for Chassis	1
47	O-Ring d4x1.8	1	108	Internal Scissors Lever for Chassis	1
48	Guide Casing	1	109	Bushing	2
49	Protect Casing	1	110	Roller for Chassis	2
50	Lever	1	111	Pin Axle	2
51	Lever Bushing	2	112	Bolt M6x8	1
52	Washer 6	2	113	Rod	1
53	Spring Washer 6	1	114	Rod	1
55	Put Pressure Assembly	2	115	Screw M6x30	1
58	Washer 8	2	116	Cover-Type Nut M6	1
A	Pump Assembly		1-49, 113, 114		
B	Swivel Wheel Assembly		78		
C	Front Wheel Assembly		83		
D	Seal Kit Assembly		1, 3, 3A, 4, 7, 8, 9, 16, 23, 25, 31, 35, 37, 38, 40 42, 44, 47		
E	Handle Assembly		52, 53, 55, 60, 61, 62, 66, 67, 115, 116		