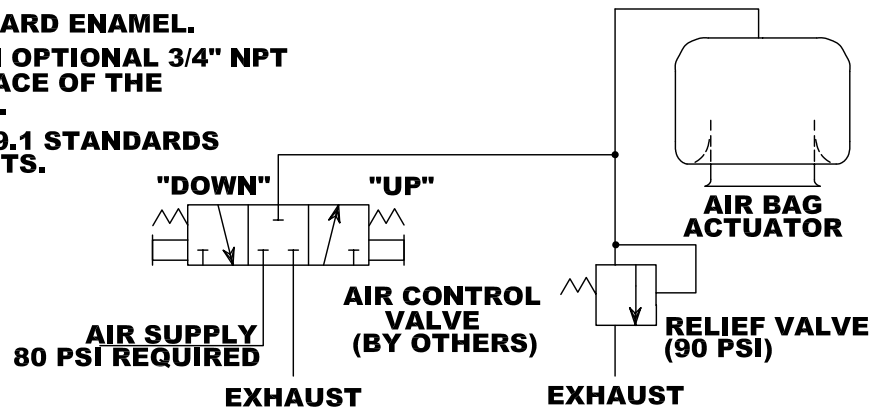
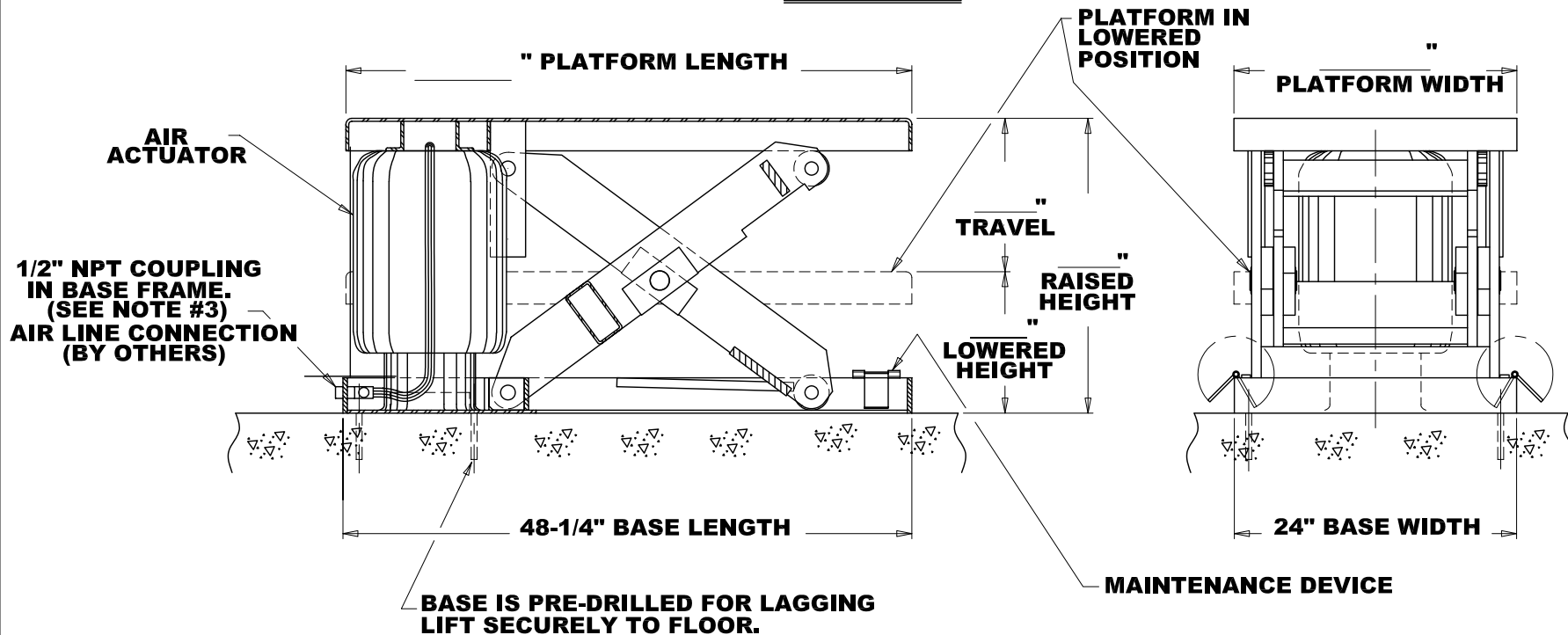


**NOTES:**

1. ALL AXLES, ROLLERS AND PIVOT POINTS ARE EQUIPPED WITH LIFE-TIME LUBRICATED BEARINGS.
2. LIFT TO BE PAINTED AQ STANDARD ENAMEL.
3. TO INCREASE DOWN SPEED, AN OPTIONAL 3/4" NPT COUPLING MAY BE USED IN PLACE OF THE STANDARD 1/2" NPT COUPLING.
4. MEETS OR EXCEEDS ANSI MH29.1 STANDARDS FOR INDUSTRIAL SCISSORS LIFTS.



**PNEUMATIC SCHEMATIC  
AIR-BAG LIFT**



THIS PROPOSAL DRAWING IS GENERIC  
BY DESIGN AND IS FOR REFERENCE ONLY.  
PLEASE CONTACT AUTOQUIP FOR JOB  
SPECIFIC APPROVAL DRAWINGS.

(NOT TO SCALE)  
PROPOSAL DRAWING  
QUOTE NO. \_\_\_\_\_

## **ABS AIR ACTUATOR LIFT**

***Autoquip***

AUTOQUIP CORP.  
1058 W.INDUSTRIAL AVE.  
GUTHRIE, OK 73044-1058  
888-811-9876 WWW.AUTOQUIP.COM