

MODEL: L-248-BP

CAPACITY: 2000 POUNDS

DECK: 48" SQUARE, 360° ROTATION WITH LOCK HANDLE

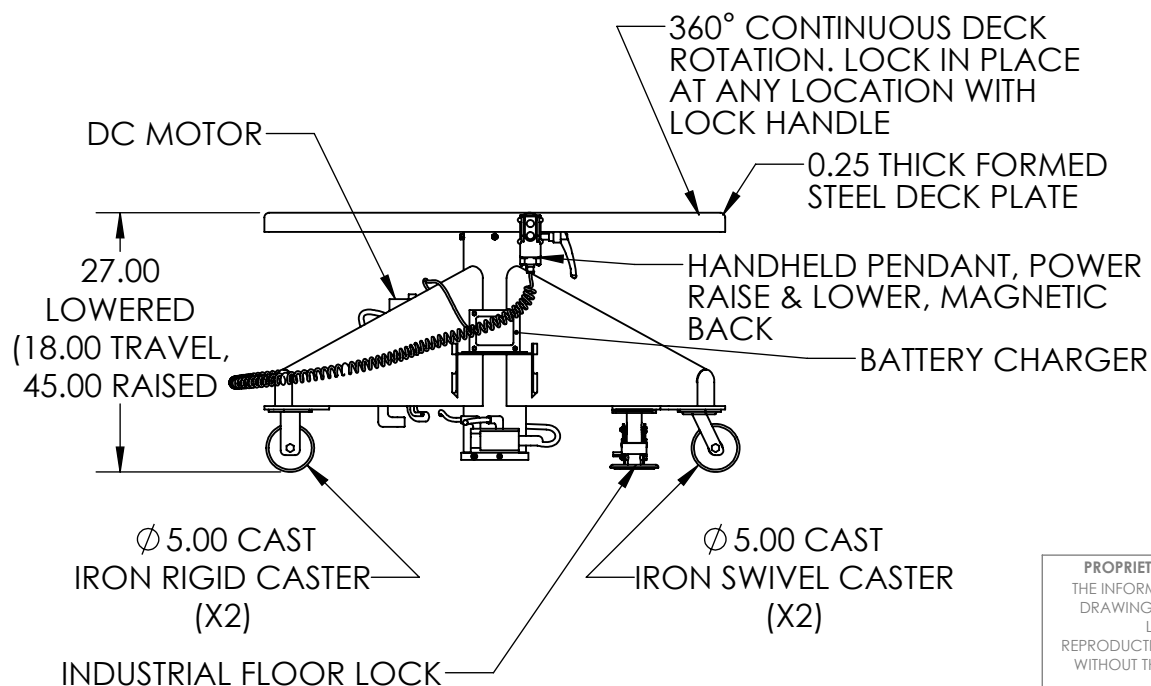
BASE: 48" SQUARE WITH FLOOR LOCK, (2) CAST IRON RIGID CASTERS, (2) CAST IRON SWIVEL CASTERS, (1) FLOOR LOCK

POWER: 12V DEEP CYCLE BATTERY, DC MOTOR, ON BOARD BATTERY CHARGER

CONTROL: HANDHELD COIL CORD PENDANT, MAGNETIC BACKING, RAISE & LOWER

PAINT: MACHINE GREEN

NOTES: WE CAN MODIFY ANY OF OUR PRODUCTS OR COMPLETELY CUSTOMIZE A LIFT FOR YOUR UNIQUE APPLICATIONS. PLEASE CONTACT YOUR SALES REPRESENTATIVE. COMPONENTS MAY VARY FROM DRAWING BASED ON AVAILABILITY OF MATERIALS.



DIMENSIONS ARE IN INCHES

PROPRIETARY AND CONFIDENTIAL
THE INFORMATION CONTAINED IN THIS DRAWING IS THE SOLE PROPERTY OF LANGE LIFT. ANY REPRODUCTION IN PART OR AS A WHOLE WITHOUT THE WRITTEN PERMISSION OF LANGE LIFT IS PROHIBITED.

| | | | |
|---|-------------------|------------------|--|
|  <p>PRODUCTS THAT LIFT THE WORLD</p> <p>Lange Lift Company a Division of Hevi-Haul Int'l. Ltd. PO Box 580 Menomonee Falls, WI 53052-0580 Toll Free : +1 800.558.0577 P: +1 262.502.0333 F: +1 262.502.0260 E-Mail: sales@langelift.com</p> | | | |
| DRAWN BY: D. Knaebe | | CHECKED BY/DATE: | |
| TITLE: L-248-BP Specification Sheet | | DATE: 12/28/2012 | |
| SCALE: 1:20 | DWG. NO. L-248-BP | REV. | |