

Maxx-Mini Lift MMLE-100 Series Service Manual



LIFT PRODUCTS INC
PO BOX 349
ELM GROVE WI 53122
262-521-5720 FAX 262-521-5725
Toll Free 877-543-8776

Model: MMLE-100 & MMLE-100XL

S/N _____

Customer _____

LIFT PRODUCTS, INC.

LIFT PRODUCTS, INC.

REGISTRATION INFORMATION

(To validate your warranty and receive updated service bulletins, please complete this form)

Date _____ Model No. _____

How did you first hear of Lift Products?

- Magazine Ad (Specify which magazine) _____
 Recommended by a dealer (Name of Dealer) _____
 Received information in the mail _____
 Internet _____
 Other (Please specify) _____

What factors caused you to choose Lift Products? _____

Describe how and where products are being used? _____

Name of person completing this form _____

Title _____

Company _____

Street Address _____

City, State, Zip _____

Phone _____ Fax No. _____

Purchased From:

Name of Dealer _____

Street Address _____

City, State, Zip _____

Phone No. _____ Fax No. _____

Please fax this form to 262-521-5725.

OPERATION AND SERVICE MANUAL

BEFORE OPERATING THE LIFT TABLE, READ THIS MANUAL CAREFULLY AND UNDERSTAND COMPLETELY. KEEP THIS MANUAL ON FILE FOR FUTURE REFERENCE. IF THIS IS LOST, PLEASE CONTACT YOUR LOCAL SUPPLIER FOR A NEW COPY. ALSO, IF THE WARNING/CAUTION DECAL ON THE UNIT IS LOST, PLEASE CONTACT YOUR LOCAL SUPPLIER FOR A NEW COPY.

NOTE: On this manual, WARNING means the danger which can lead to death or serious injury. CAUTION mean the danger can lead to slight or property damage.

1. WARNING

1. DO NOT allow another person to stand in front of or behind lifter when it starts to move.
2. ALWAYS travel with fork in lowered position.
3. NEVER sit, stand or ride on forks or platform. SEVERE PERSONAL INJURY could result.
4. NEVER go under forks or platform. SEVERE PERSONAL INJURY or DEATH could result.
5. DO NOT use in area of multi level floor surfaces that could create loss control and result in SEVERE INJURY and PROPERTY DAMAGE.
6. DO NOT use lifter on slope, un-level or soft surface. Lifter may become uncontrollable. SEVERE PERSONAL INJURY and PROPERTY DAMAGE could result.
7. KEEP FEET CLEAR of rolling wheel that could result in SEVERE PERSONAL INJURY.
8. DO NOT load on fork more than the other and DO NOT load tips on forks. SEVERE PERSONAL INJURY and PROPERTY DAMAGE could result.
9. DO NOT overload lifter. ALWAYS stay within designated capacity and load center rating. SEVER PERSONAL INJURY and PROPERTY DAMAGE could result.
10. SHEARING HAZARD. NEVER place hands or feet under lowering forks. SEVERE PERSONAL INJURY could result.
11. NO FIRE during charging. Read battery operation manual.
12. HIGH VOLTAGE. Disconnect battery socket before opening control panel box.
13. DO NOT remove battery terminal cover. Short-circuit or electric shock could occur.

2. CAUTION

1. Hazard or unsafe practice which, if not avoided, may result in MINOR or MODERATE PERSONAL INJURY and PROPERTY DAMAGE.
2. READ THE OPERATION MANUAL COMPLETELY BEFORE USING AND THOROUGHLY UNDERSTAND AND FOLLOW ALL SAFETY INSTRUCTIONS.
3. This liter is designated to use with stable uniform load on a solid lever floor. DO NOT use the lifter for and other purpose than its intended use.
4. Lifter shall be operated by TRAINED personnel. OPERATION shall read "Operation Manual" completely and thoroughly understand the controls and operation of this equipment BEFORE operation of the lifter.
5. ALWAYS observe lifter and ALWAYS stay at the controls while the lifter is in motion. RELEASE controls and STOP lifter immediately if load on lifter appears to become unstable. NEVER leave the load lifter unattended unless the forks are in the fully lowered position.

6. DO NOT slide the load on or off the forks. The lift may move allowing the load to fall. SEVERE PERSONAL INJURY and PROPERTY DAMAGE could result.
7. DO NOT use lifter with unstable, unbalanced or loosely stacked load. Unbalanced loads may become unstable and fall. SEVERE PERSONAL INJURY and PROPERTY DAMAGE could result.
8. ALL lifter service must be performed by qualified personnel only.
9. ALWAYS keep feet, hands and fingers away from casters, load wheels and all moving components. SEVERE INJURY could result.
10. ALWAYS perform maintenance and inspections with lifter unloaded.
11. Prolonged continuous working might cause damage of power pack.
12. Stop operation if temperature of hydraulic oil is too high. The lifter is NOT waterproof and is intended to be used in a dry environment.

3. DAILY INSPECTION

Daily inspection is effective to find the malfunction or faulty on the lifter. Check the lifter on the following points before operation.

CAUTION: DO NOT use lifter if any malfunction or faulty is found.

1. Check scratch, bending or crack on the lifter.
2. Check smooth movement of the wheels.
3. Check if there is oil leakage from the cylinder.
4. Check the vertical creep of forks.
5. Check the function of brake.
6. Check if all the bolts and nuts are tightened firmly.

4. NAME OF PARTS



1.Handle

2.Switch

3.Brake Pedal

4.Platform

5. Link

6.Guide rail

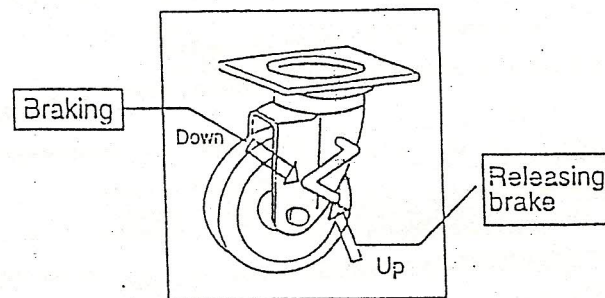
5. OPERATING LIFT TABLE

How to use the brake.

CAUTION: Brake lift table when not moving it in order to prevent sudden movement.

The brake is equipped with the swivel caster on the right side.

1. Braking the wheel, press the brake pedal.
2. Releasing the brake, lift up the brake pedal.

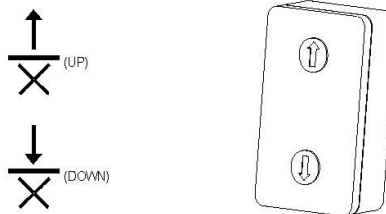


6. LIFTING UP FORKS

CAUTION:

1. DO NOT overload the lifter. Stay within its rated capacity.
2. Prolonged continuous working might cause damage of hydraulic power pack.
3. Step operation if temperature of hydraulic oil is too high.

Push the button "UP" and the table lifts up.



7. LOWERING FORKS

CAUTION: DO NOT lower forks with load too fast and stop suddenly. Impact could be created and lifter could be damaged.

Push the button DOWN and the table lowers

8. MOVING THE LIFTER

WARNING: DO NOT move lifter on slope or inclined surfaces. The lifter can become uncontrollable and create danger.

1. Make the load stable to prevent it to fall.
2. Lower the table down.
3. Release the brake and move the lifter.

CAUTION: KEEP watching the condition of the load. Stop operating lifter if the load becomes unstable.

9. CHARGING THE BATTERY

1. Check the quantity of battery fluid. If it is insufficient, add the battery solution according to battery operation manual.
2. Disconnect the battery socket.
3. Connect the charging port of battery socket to the battery charger.

10. REGULAR INSPECTION

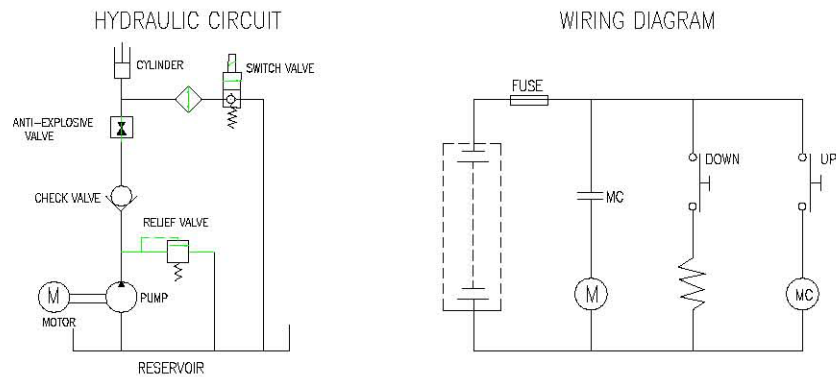
Perform the regular inspection for the safety operation

1. Check the items expressed in daily inspection (daily)
2. Lubricate with grease the guides where roller moves. Also, lubricate the grease nipples and chains. (Every Month).
3. Lubricate all the pivoting points and axles. (Every 6 months).
4. Replace the hydraulic oil for the first time: Accumulated working ten hours.
5. Replace the hydraulic oil. (Every 12 months).

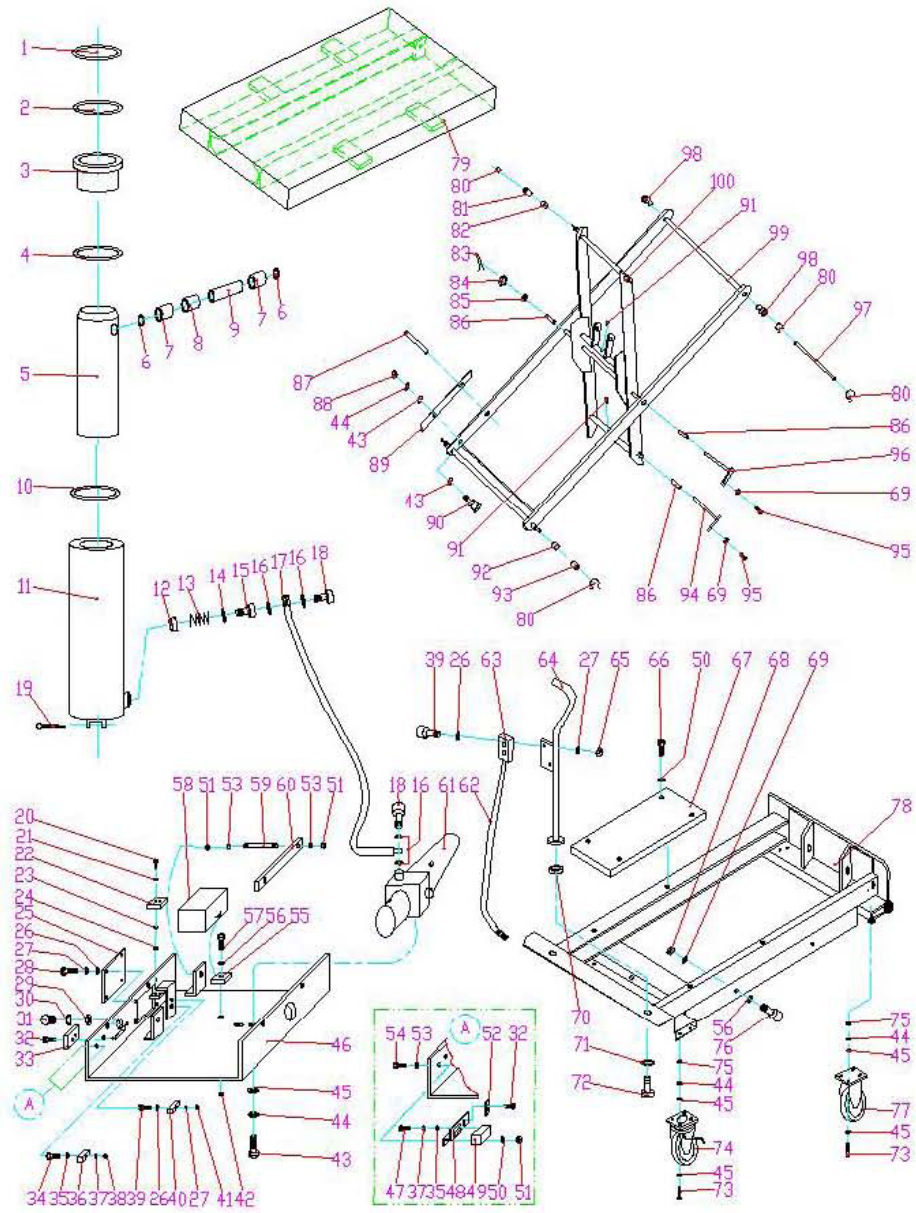
TROUBLE SHOOTING

TROUBLE	CAUSE	REPAIR
Platform does not rise while motor does not run.	1. Faulty wiring.	1. Check the wiring referring to the actual diagram.
	2. Battery socket is disconnected.	2. Connect the battery socket.
	3. Battery charge is insufficient.	3. Charge the battery.
Platform does not rise while motor runs.	1. Faulty adjustment of relief valve.	1. Adjust relief valve again.
	2. Faulty hydraulic pump.	2. Replace power pack.
	3. Shortage of hydraulic oil.	3. Add oil.
Vertical creep of forks.	1. Oil leakage in power pack.	1. Replace lowering valve.
	2. Oil leakage from hydraulic circuit.	2. Check hydraulic circuit and repair.
Oil leakage form cylinder	Faulty sealing.	Replace sealing.
Oil leakage from piping or joint.	Insufficient tightening or seal invalid	Tighten joint again or replace seal.
Oil leakage from air breather.	Excessive quantity of oil.	Reduce oil quantity.

HYDRAULIC CIRCUIT/WIRING DIAGRAM



MMLE-100



LIFT TABLE SPARE PARTS LIST FOR MMLE-100

NO	DESCRIPTION	QTY	NO	DESCRIPTION	QTY
1	Seal Cover DH60	1	52	Terminals	1
2	Y-ring UHS 60A	1	53	Washer 6	12
3	Cylinder Cover	1	54	Hex Socket Screw M6x16	2
4	O-Ring 65x2.65	1	55	Battery Depressed Plate	1
5	Piston Rod	1	56	Washer 8	9
6	Retaining Ring for Axle 25	2	57	Hex Screw M8x20	1
7	Bushing	2	58	Battery	1
8	Bushing	1	59	Bolt	2
9	Pin Axle	1	60	Battery Depressed Plate	1
10	Snap Ring 60	1	61	Hydraulic Power Pack	1
11	Cylinder	1	62	Electric Wire	1
12	Prevent Burst Valve	1	63	Up-Down Button	1
13	Spring	1	64	Handle	1
14	Seal Ring 14	1	65	Nut M4	2
15	High Pressure Hose	1	66	Hex Screw M6x10	4
16	Joint	4	67	Covering Plate	1
17	Split Pin	1	68	Nut M8	4
18	Screw M3x20	2	69	Spring Washer 8	8
19	Split Pin	1	70	Spacing Casing	2
20	Screw M3x20	2	71	Spring Washer 12	2
21	Washer 3	2	72	Hex Screw M12x40	2
22	Charging Socket	1	73	Hex Socket Screw M10x25	16
23	Spring Washer 3	2	74	Rear Wheel	2
24	Nut M3	2	75	Nut M10	16
25	Covering Plate	1	76	Hex Socket Screw M8x20	4
26	Washer 4	7	77	Front Wheel	2
27	Spring Washer 4	7	77A	Chassis	1
28	Screw M4x10	4	78	Table	1
29	Nut	1	79	Retaining Ring for Axle 20	6